

GENERAL

	Page
GENERAL REPAIR INSTRUCTIONS	1-2
ABBREVIATIONS USED IN THIS MANUAL	1-3
LOCATION OF IDENTIFICATION NUMBER	1-4
EMISSION CONTROL SYSTEM CONNECTIONS	1-5

GENERAL REPAIR INSTRUCTIONS

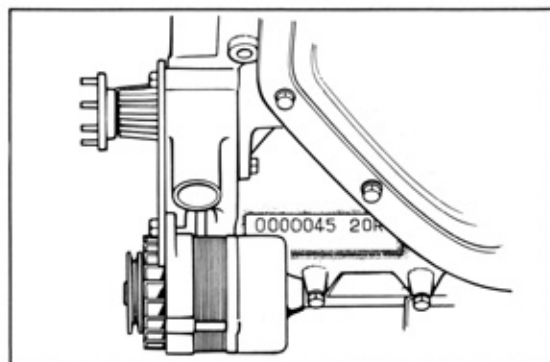
1. Use fender, seat, and floor covers to keep the car clean and prevent damage.
2. During disassembly, keep parts in order for reassembly.
3. Before performing electrical work, disconnect the cable to the positive (+) battery terminal.
4. Always replace gaskets and O-rings with new ones.
5. Always use sealer on gaskets to prevent leaks.
6. Carefully observe all specifications for bolt torques. Always use a torque wrench.
7. Use genuine Toyota parts.
8. If the vehicle is to be jacked up only at the front or rear end, be sure to block the wheels in order to ensure safety.
9. After the vehicle is jacked up, do not fail to support it on stands. It is extremely dangerous to do any work on the vehicle raised on jack alone, even for a small job that can be finished quickly.
10. In jacking up the vehicle and supporting it on stands, the front end should be supported at the rocker panel and the rear end at the rear axle housing.
11. Use of a special service tool (SST) may be required, depending on the nature of the repair. Be sure to use SST where specified and follow the proper work procedure. A list of the SST is found at the back of this manual.

ABBREVIATIONS USED IN THIS MANUAL

For convenience, the following codes are used in this manual.

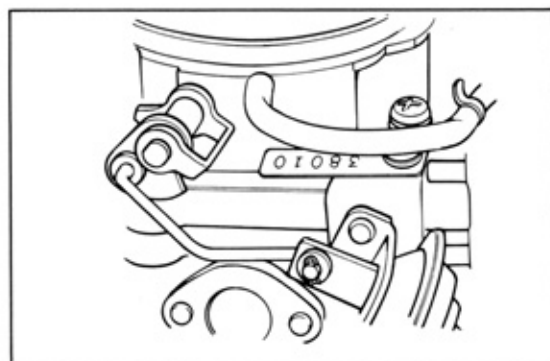
Abbreviation	Term	Definition
SST	Special Service Tool	This term designates tools that have been manufactured specially for the servicing of this vehicle. Their part numbers are shown in the text enclosed by [].
STD	Standard	This term refers to the dimension of the part when originally manufactured.
O/S	Oversize	Sizes larger than STD are indicated as O/S.
U/S	Undersize	Sizes smaller than STD are indicated as U/S.
MP	Multipurpose	Use in the case of MP grease.
BTDC	Before Top Dead Center	
M/T	Manual Transmission	
A/T	Automatic Transmission	

LOCATION OF IDENTIFICATION NUMBER



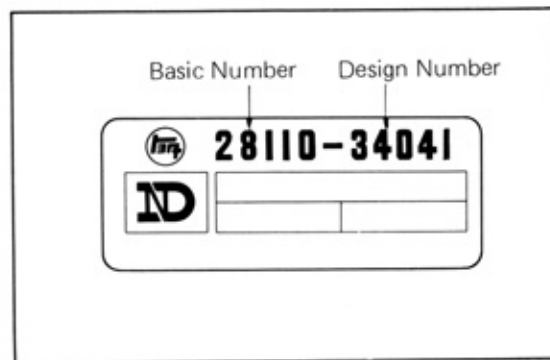
ENGINE SERIAL NUMBER

The engine serial number is stamped on the left side of cylinder block, behind the alternator.



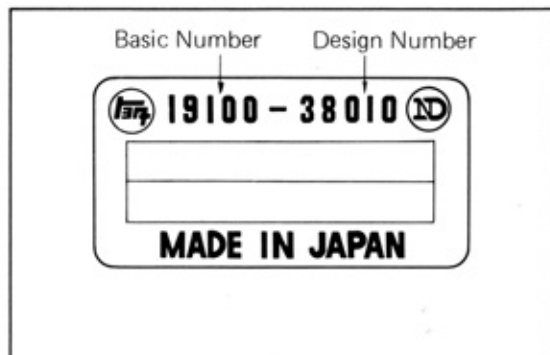
CARBURETOR PART NUMBER

Identification tag stamped design number is attached on the carburetor. The basic part number for carburetor is 21100.



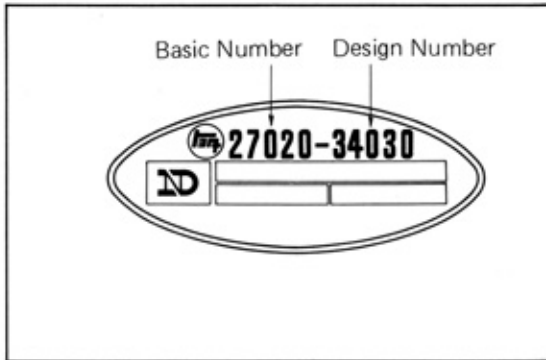
STARTER PART NUMBER

Part number is stamped on the decal of the starter field frame.



DISTRIBUTOR PART NUMBER

Part number is stamped on the decal of the distributor body.

**ALTERNATOR PART NUMBER**

Part number is stamped on the decal of the alternator rear end cover.